



Corporate Office: 801, 8th Floor, Eldeco Corporate Tower,
Vibhuti Khand, Gomti Nagar, Lucknow - 226010 | Web: www.orongroup.in

Site Office: Arjunanj, Sultanpur Road, Lucknow

Call: **89 5017 5017** | www.orongroup.in

Project RERA Regn. No.: **UPRERAPRJ469558/12/2024** | RERA Website: www.up-fera.in

ACCOUNT DETAILS: Name of the Account: **ORI Collection A/c for Dynasty By ORO**
Account No.: **43378037770** | Bank Name: State Bank Of India | Branch Name: Commercial Branch, Gokhale Marg | IFSC Code: SBIN0004166



ASSOCIATION WITH



CREATE YOUR OWN LEGACY



Year of Year
GROWTH, PROGRESS
AND TRANSFORMATION

Founded in 2017, ORO Group has rapidly emerged as a trusted name in the real estate industry, establishing its reputation within just eight years.

With a strong commitment to unmatched craftsmanship, unwavering quality, and a customer-oriented approach, the company has successfully delivered four landmark projects, while four more are nearing completion.

ORO Group takes pride in creating exceptional living spaces that blend modern design with superior amenities, ensuring the best value for its customers. With a vision to redefine urban living, the company continues to set new benchmarks in excellence and innovation.

The Legacy of Land

The story of this prestigious project begins with Mr. Vishwa Nath Singh, a distinguished landlord of Village Sarsawan, whose legacy was inherited by his son, Mr. Manoj Singh Chauhan.

With a visionary outlook, he laid the foundation for a strong real estate presence, transforming the family's heritage into a symbol of growth and prosperity. Today, this esteemed legacy is being carried forward by the Dynasty of ORO Group in collaboration with Casa Buildtech LLP a name synonymous with trust, excellence, and timeless value.

Investing with us is not just about buying property; it is about becoming part of a legacy that will be cherished for generations to come. It is more than just a building it is a foundation for dreams, a symbol of heritage, and a promise for a prosperous future.

RERA REGN. NO.
UPRERAPRJ469558/12/2024
RERA Website: www.up-rera.in




DYNASTY
—BY ORO—
CREATE YOUR OWN LEGACY

2 & 3 BHK APARTMENTS

Arjunganj, Lucknow



Where
Happiness
lives in every floor



Build a
Legacies
Not Just a Home

Build a legacy at Dynasty with Oro.
Where exceptional living meets your highest aspirations, creating
a home that mirrors your success and vision for the future..

WHERE COMFORT
MEETS A

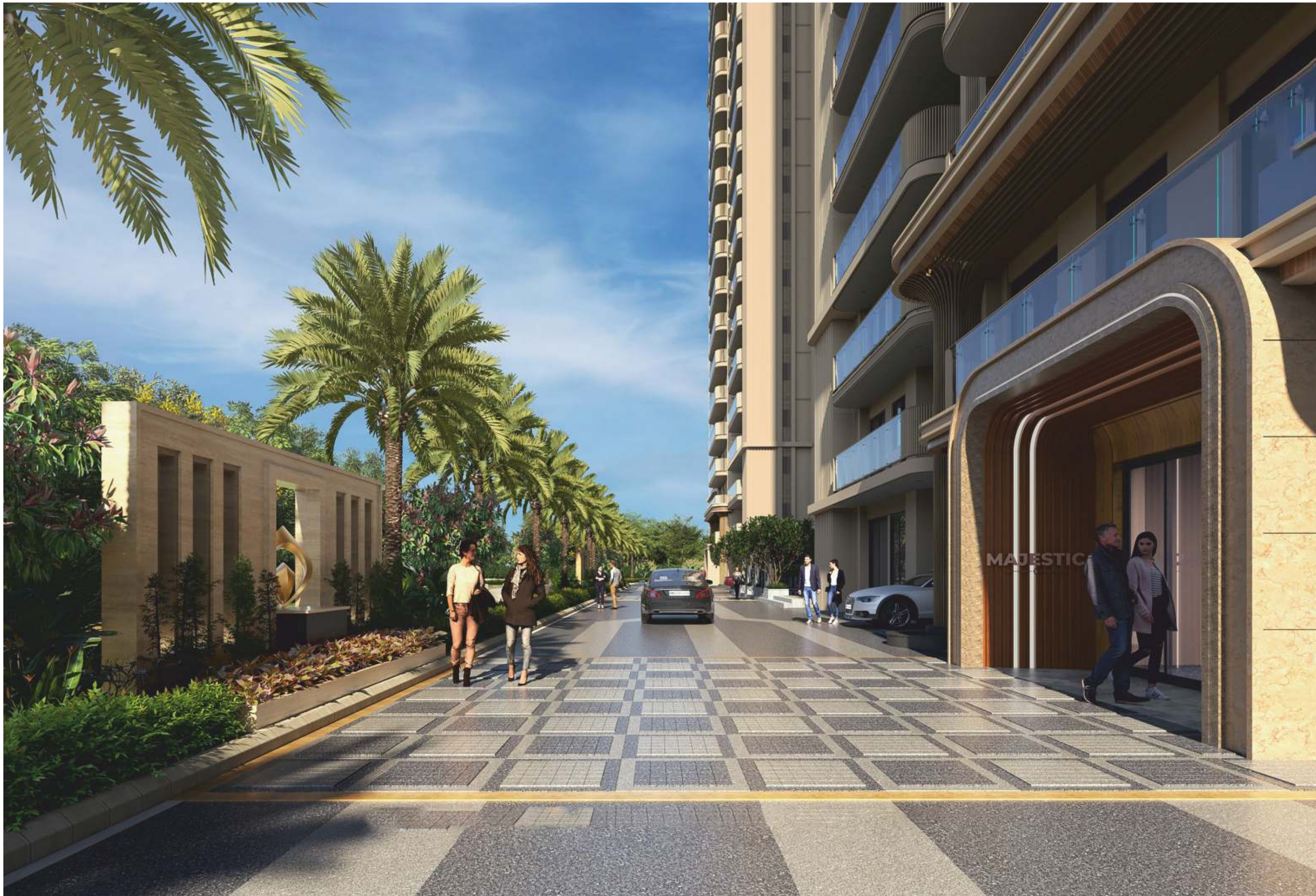
Higher Standard

Experience a lifetime of cherished living with 20% construction and 80% open space, offering luxury, freedom, and tranquility in a home surrounded by natural beauty.

80%
OPEN SPACE

20%
CONSTRUCTION





ARTISTIC IMAGE

WELCOME TO
Magnificence

What is life without a larger-than-life beginning?
At The Oro Dynasty, take the first step towards your home
with an exceptional entrance lobby, complemented by high-
speed elevators that elevate you to the top.



WHERE EVERY
CORNER IS THOUGHTFULLY

Designed

Dynasty Apartments offer 2 & 3 BHK homes crafted with contemporary aesthetics and smart functionality. Every space is designed to complement your modern lifestyle while ensuring maximum comfort and convenience.

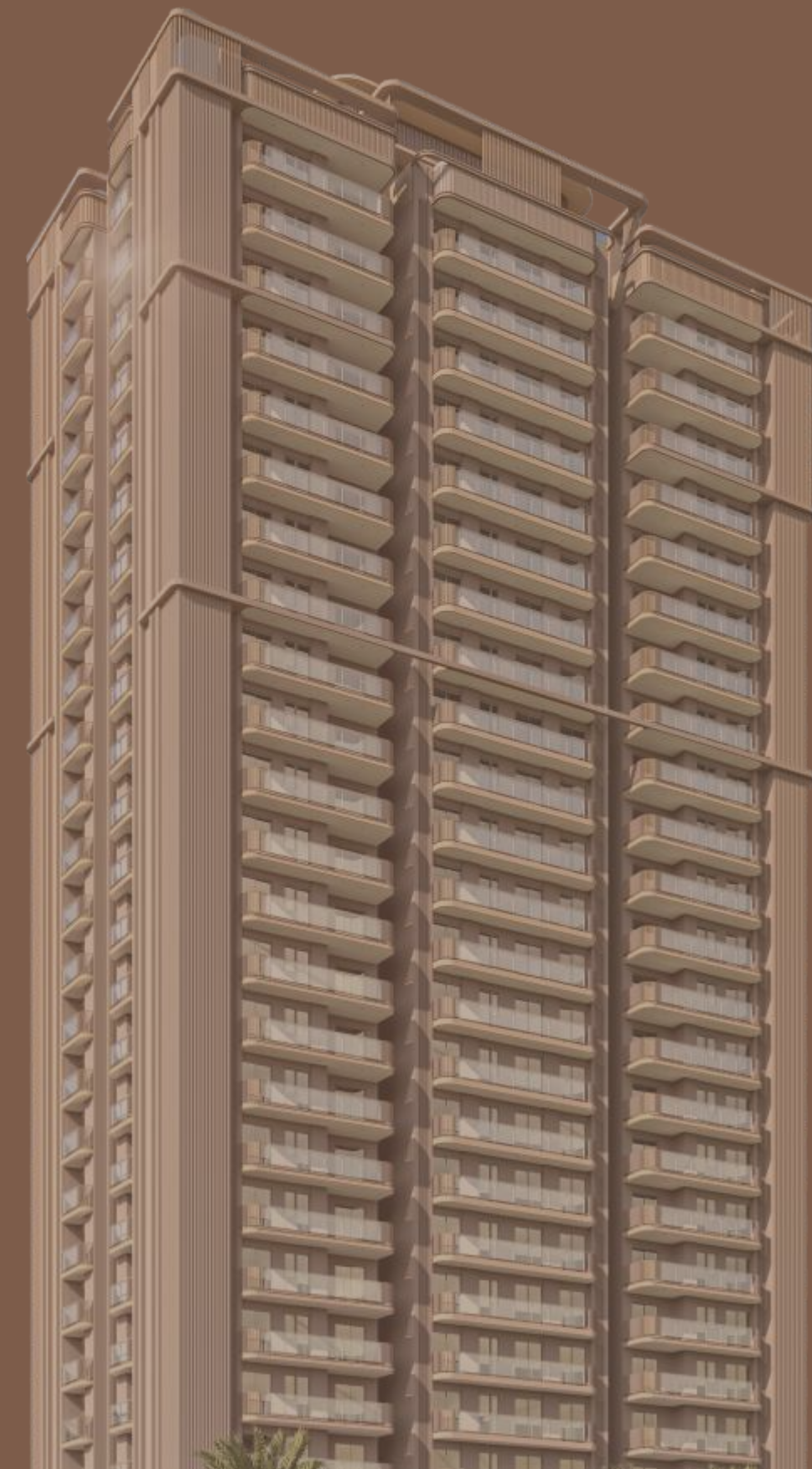


WHERE
LIFE BECOMES MORE
Enjoyable

Discover the perfect blend of comfort and luxury
with our 2 & 3 BHK apartments.

Thoughtfully designed to bring joy, convenience, and
vibrant living to your daily routine. Experience life
the way it's meant to be enjoyable and fulfilling.

Unmatched Luxury with 34+ World-Class Amenities!



CLUB



GYMNASIUM



WATER CASCADE



SCULPTURE COURT



SENIOR CITIZEN PARK



GAZEBO



HALF BASKETBALL COURT



AMPLE CAR PARKING



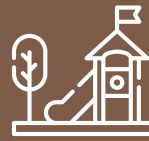
DROP OFF ZONE



JOGGING TRACK



AMPHITHEATRE



KIDS PARK



VERTICAL GARDEN



PAVILION



LANDSCAPE SITOUT



PARTY LAWN



SPACIOUS BALCONIES



CELEBRATION DECK



FRAGRANCE GARDEN



COMMERCIAL PLAZA



SWIMMING POOL



KIDS' POOL



HYDRO THERAPY POOL



PARTY DECK



Swimming Pool

A UNIQUE GLOW POOL
TO INDULGE IN
AT THE PODIUM LEVEL

ARTISTIC IMAGE

Club IMPERIAL

Club Imperial is a luxurious retreat offering exclusive amenities, from a cutting-edge fitness center and vibrant party hall to pool tables and a dedicated kids' play area, all designed to elevate your lifestyle and create unforgettable experiences.

The Perfect Place to
PLAY, RELAX, AND UNWIND

CLUB AMENITIES



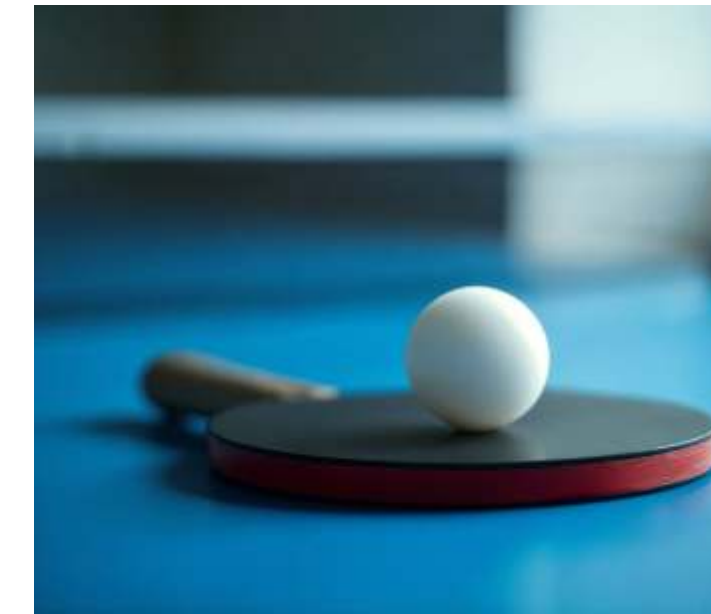
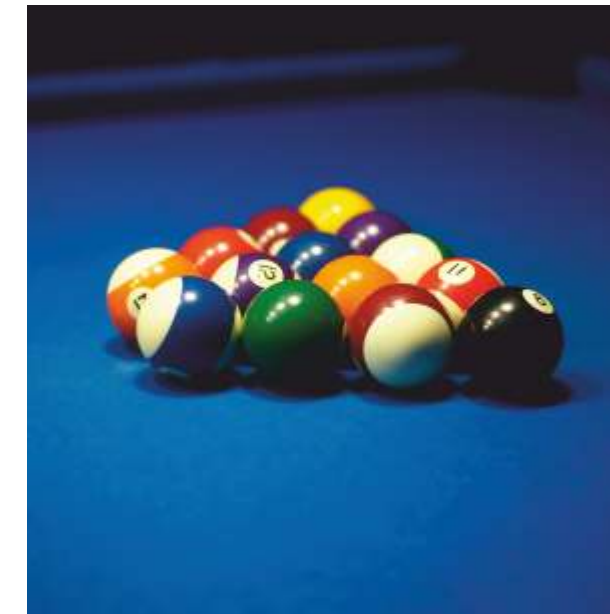
REFERENCE IMAGE

WHERE LITTLE
SWIMMERS MAKE

Big Memories

The children's pool offers a safe and fun-filled space for young ones to splash, play, and enjoy their time in the water.

WHERE TIME BECOMES TIMELESS



REFERENCE IMAGES



ARTISTIC IMAGE

LUSH INTERIORS

Plush Exteriors

Experience the perfect blend of opulence with Lush Interiors and Plush Exteriors at The Oro Dynasty. Inside, enjoy spacious, elegantly designed interiors offering both comfort and style. Outside, be captivated by modern exteriors that elevate the skyline and reflect your distinguished lifestyle.

SITE LAYOUT PLAN

LEGENDS

GENERAL

- 01. ENTRANCE PLAZA
- 02. SIGNAGE WALL
- 03. GUARD ROOM
- 04. WELCOME PLAZA
- 05. WATER CASCADE
- 06. SCULPTURE COURT
- 07. DRIVEWAY
- 08. PARKING
- 09. TOWER DROP OFF
- 10. CLUB DROP OFF
- 11. JOGGING TRACK

LANDSCAPING

- 12. AMPHITREATRE
- 13. KIDS PARK
- 14. SAND PIT
- 15. CELEBRATION LAWN
- 16. FRAGRANCE GARDEN
- 17. GET TOGETHER GAZEBO
- 18. SENIOR CITIZEN LAWN
- 19. HEALTH PARK
- 20. HALF BASKETBALL COURT
- 21. PATHWAY
- 22. OXY GARDEN
- 23. FOREST GARDEN
- 24. FEATURE WALL
- 25. VERTICAL GARDEN
- 26. PAVILLION
- 27. LANDSCAPE SITOUT

CLUBBING

- 28. CLUB
- 29. PARTY LAWN
- 30. SWIMMING POOL
- 31. KIDS' POOL
- 32. HYDRO THERAPY POOL
- 33. PARTY DECK

COMMERCIAL

- 34. COMMERCIAL PLAZA (ORO EMPORIO)
- 35. RETAIL COURT



GG CITY/ANSAL GOLF CITY ARMY CANTT / HAZRATGANJ

TYPICAL FLOOR PLAN



UNIT PLAN - 1,2,3 & 4



ACCOMMODATION
3BHK + DRAWING + DINING
+ KITCHEN + 3 TOILET + DRESSING + 3 BALCONY

Carpet Area	989.09 Sq. Ft. (91.88 Sq. Mtr.)
Balcony Area	214.20 Sq. Ft. (19.90 Sq. Mtr.)
Built-Up Area	1097.00 Sq. Ft. (101.91 Sq. Mtr.)
Super Area*	1715.00 Sq. Ft. (159.32 Sq. Mtr.)

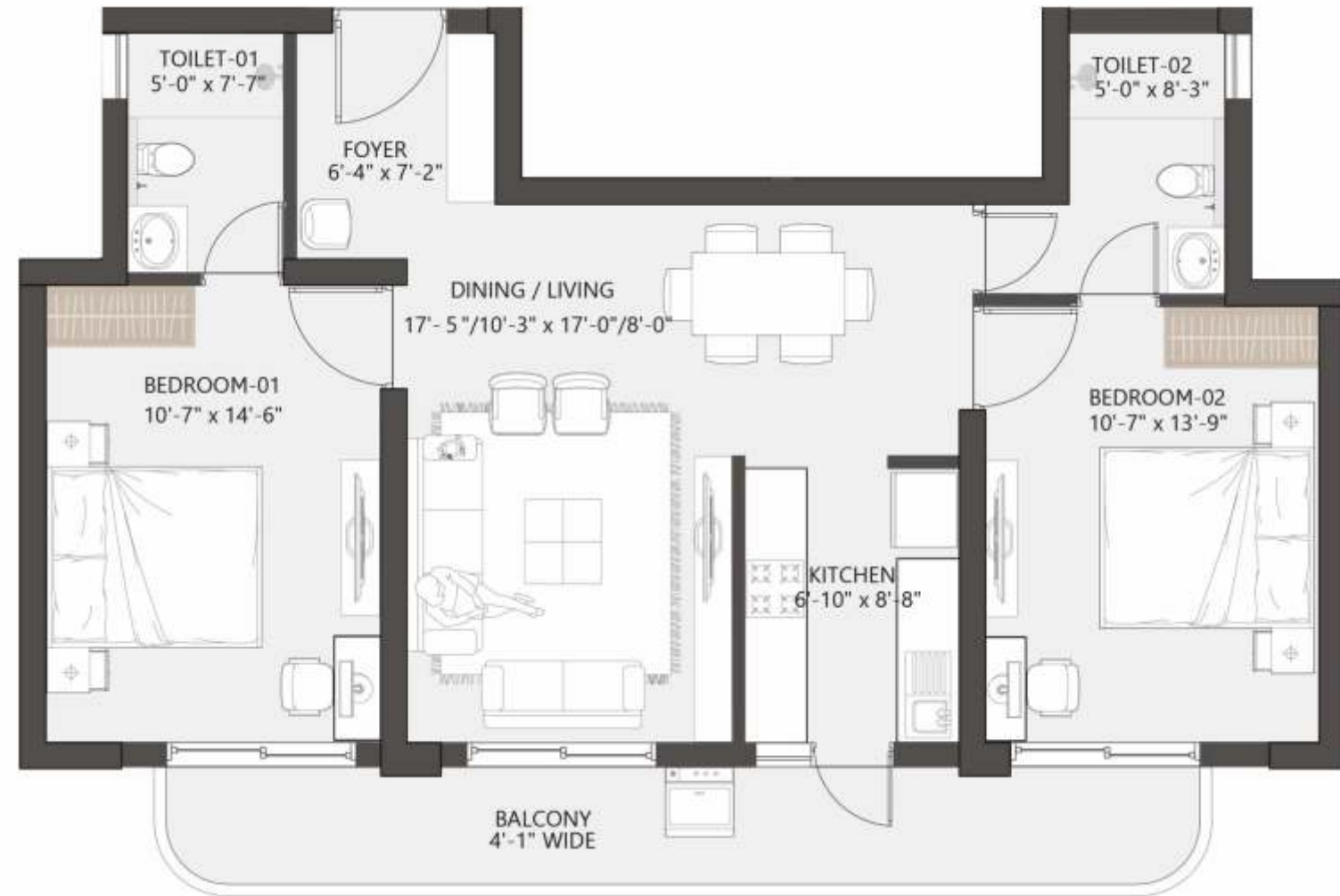
UNIT PLAN - 6



ACCOMMODATION
2BHK + DRAWING + DINING
+ KITCHEN + 2 TOI

Carpet Area	812.14 Sq. Ft. (75.45 Sq. Mtr.)
Balcony Area	135.19 Sq. Ft. (12.56 Sq. Mtr.)
Built-Up Area	918.00 Sq. Ft. (85.28 Sq. Mtr.)
Super Area*	1380.00 Sq. Ft. (128.20 Sq. Mtr.)

UNIT PLAN - 5
















ACCOMMODATION 2BHK + DRAWING + DINING + KITCHEN + 2 TOI

Carpet Area	764.24 Sq. Ft. (71.00 Sq. Mtr.)
Balcony Area	134.87 Sq. Ft. (12.53 Sq. Mtr.)
Built-Up Area	870.00 Sq. Ft. (80.82 Sq. Mtr.)
Super Area*	1320.00 Sq. Ft. (122.63 Sq. Mtr.)



PREMIUM SPECIFICATIONS

STRUCTURE		<ul style="list-style-type: none"> Structure designed with the highest seismic considerations for the zone as stipulated by the BIS code and for better safety. 	KITCHEN		<ul style="list-style-type: none"> Flooring/Skirting: Antiskid ceramic tiles. Wall Finishes: Acrylic emulsion paint on walls Ceiling: Oil bound distemper with part false ceiling Counter: Granite/Tiles
FOUNDATION		<ul style="list-style-type: none"> Reinforced concrete footings & columns. 	CP FITTINGS & ACCESSORIES		<ul style="list-style-type: none"> Grohe/Jaguar/Roca or equivalent Toilet fittings/single lever fitting in all toilets. Provision for geyser installation.
ALL BEDROOMS		<ul style="list-style-type: none"> Flooring/Skirting: Wooden laminated flooring AC-3 grade in Master Bedroom, Other Bedrooms superior quality vitrified tiles 600x600mm or bigger. Wall Finishes: Acrylic emulsion on POP punning. Ceiling: Oil bound distemper. 	LIFT LOBBY		<ul style="list-style-type: none"> Flooring: Granite / Marble / Tiles Wall Finishes: Granite / Marble / Tiles upto 2100 mm on lift side wall and acrylic emulsion paint in balance area. Ceiling: Acrylic emulsion paint
LIVING & DINING ROOM		<ul style="list-style-type: none"> Flooring/Skirting: Premium quality vitrified tiles 800x800 mm or bigger. Wall Finishes: Acrylic emulsion on POP punning. Ceiling: Oil bound distemper. 	DOORS		<ul style="list-style-type: none"> Engineered laminated frame with laminated door shutters Hardware: Locks, Handles and Knobs (Mortise and Cylindrical locks) from reputed makes and brands. High quality steel/brass hardware.
TOILETS		<ul style="list-style-type: none"> Flooring: Antiskid ceramic tiles. Wall Finishes: Ceramic wall tiles upto dado level (approx. 2400 mm) Ceiling Finishes: Oil bound distemper with false ceiling Counter: Granite/Tiles Sanitary Ware: Premium quality range. 	WINDOWS & EXTERNAL GLAZING		<ul style="list-style-type: none"> Powder coated aluminum frame or UPVC frame windows with clear glass.
STAIRCASE		<ul style="list-style-type: none"> Flooring: Kota Stone / Indian Stone / Granite / Ready-made Staircase Tiles Railings: Powder quoted MS Railings Wall Finishes: Oil bound distemper. 	EXTERNAL WALL FINISH		<ul style="list-style-type: none"> Exterior grade paint from reputed makes and brands.
			ELECTRICAL WIRING & INSTALLATIONS		<ul style="list-style-type: none"> Fixtures & Fittings: ISI mark switches / sockets, distribution boxes and circuit breakers from standard makes and brands. Wiring: ISI mark concealed conduits with copper wire. Plumbing: ISI mark CPVC water supply pipes with standard valves and accessories. Security System: CCTV surveillance, EPABX, Video Door Phones, Burglar Alarm System.

Note: The above specifications are only indicative and some of these may be changed in consultation with the architect or equivalent may be provided at the sole discretion of the company.



DYNASTY

—BY ORO—
CREATE YOUR OWN LEGACY

SCAN QR TO VIEW
PROJECT LOCATION



KEY DISTANCES

SHAHEED PATH 02 MINS	08 MINS	GOMTI NAGAR
EKANA CRICKET STADIUM 04 MINS	08 MINS	CENTRUM HOTEL
PHOENIX PALASSIO MALL 04 MINS	10 MINS	HAZARATGANJ
LULU MALL 05 MINS	10 MINS	KISAN PATH
MEDANTA HOSPITAL 06 MINS	15 MINS	AIRPORT

CONVENIENCE UP CLOSE

At Dynasty by Oro you are conveniently placed with all your social, educational, entertainment and daily needs being around the corner. You are stone's throw away from School, College, Market, Malls & Multiplexes etc. Living this up close to convenience makes your life smoother and better.

